



HAD 30B

CONDENSATE AUTO DRAINS

FOR REMOVAL OF LIQUID CONDENSATE DRYING SYSTEM

All condensate produced by air drying needs to be handled properly because it is a dirty mixture containing water, air compressor oil, dirt and rust. Due to the constant changes of atmospheric conditions, production load and air compressor conditions, solenoid valves or manual discharge valves are not suitable for use in most cases. Because these methods are easy to cause huge waste of energy or a large amount of water leakage in the filter due to improper adjustment.

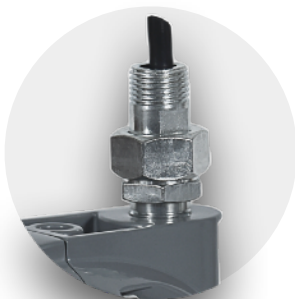
Condensate must be drained frequently, and typical condensate drains tend to lose valuable compressed air.

On the market, there are several types of auto drains for your choice, when you selecting a condensate drain, factors such as potential air loss, energy consumption and maintenance frequency are essential to running the most efficient compressed air system.

In order to extend the service life and improve energy saving efficiency, it is recommended to adopt the Yun Air-HAD 30B zero air loss drain. We could supply 3 sizes of mechanical float drains what are compact and highly reliable for industrial compressed air treatment applications, uses the relationship between buoyancy and pressure to control condensate discharge, which is cost-effective and effective, zero-loss option. This style drain does not require an electric power source or manual calibration for installation, therefore reduce the waste of compressed air has a positive effect on the efficiency of the whole system. However, one may need to manually service the drain to remove large particles within the internal strainer.



Mixed lubricated oil pollutants inside the drain body



The anti-airlock adapter balances the air pressure



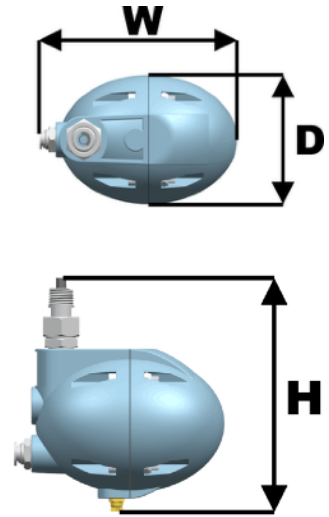
Stainless steel manual drain valve suited once an interior blockage occurred



Easy to install fast connection kit for venting

Technical Data

Description	Automatic Drain
Auto drain type	Float type
Model	HAD30B
Operating temperature range	1.5-85 °C
Proof pressure	20 bar
Max.Operating pressure	13 bar
Largest discharge capacity (at 7 bar)	800 l/h
Initial Discharge value	91-93 mL
Mass	1.1 kg
Inlet/outlet connection	Rc1/2", Rc1/2"
Medium	Condensate (air, water, oil)
Measurment W*D*H (mm)	172*107*180



Features

- Zero air/gas loss
- Buoyancy and pressure control minimize costly compressed air loss.
- A low velocity condensate outlet ensures that no emulsion is created.
- No need for electrical wiring, as no power supply is required.
- Manual drain valve for discharge and operational check fitted as standard.

Applications for Automatic Drains

- For the air compressor itself.
- Installed on the air compressor after cooler.
- Install on the buffer tank / surge tank.
- Installed on the coalescing pre-filter element for coarse filtration.
- Installed on the cold spot or outlet of the refrigerated dryer.
- Installed on the outlet of the desiccant dryer.





Yun Air Technology Co., Ltd.



Hongrijia Depurate Facility Science & Technology Co.,Ltd

Building E1-1-1, 1-2 floors, Qun Yi Leng
Manufacturing Industrial Park, Tong Hu Town,
Hui Cheng District, Huizhou, Guangdong,
China



Office Address:
Rui ji 1st Rd, Longgang District
Shenzhen, Guangdong, China



+86 150 1366 4809



info@yun-air.com



www.yun-air.com



OEM Capabilities

When you need a special auto drain for a unique application, Yun Air experts are ready to work with you. We can tailor a configuration to meet your special need. In addition, with LEAN manufacturing, we can produce specials in reasonable quantities, in a reasonable amount of time, at a reasonable price. Not only will this enhance the performance of your product, but it will benefit you with aftermarket sales of replacement elements.

OUR RANGES OF PRODUCTS INCLUDE THE FOLLOWING:

- Compressed air dryers
- Compressed air filters
- Compressed air water separators
- Alternative air filter elements
- Condensate auto drain
- Compressed air accessories
- Portable mask

www.yun-air.com